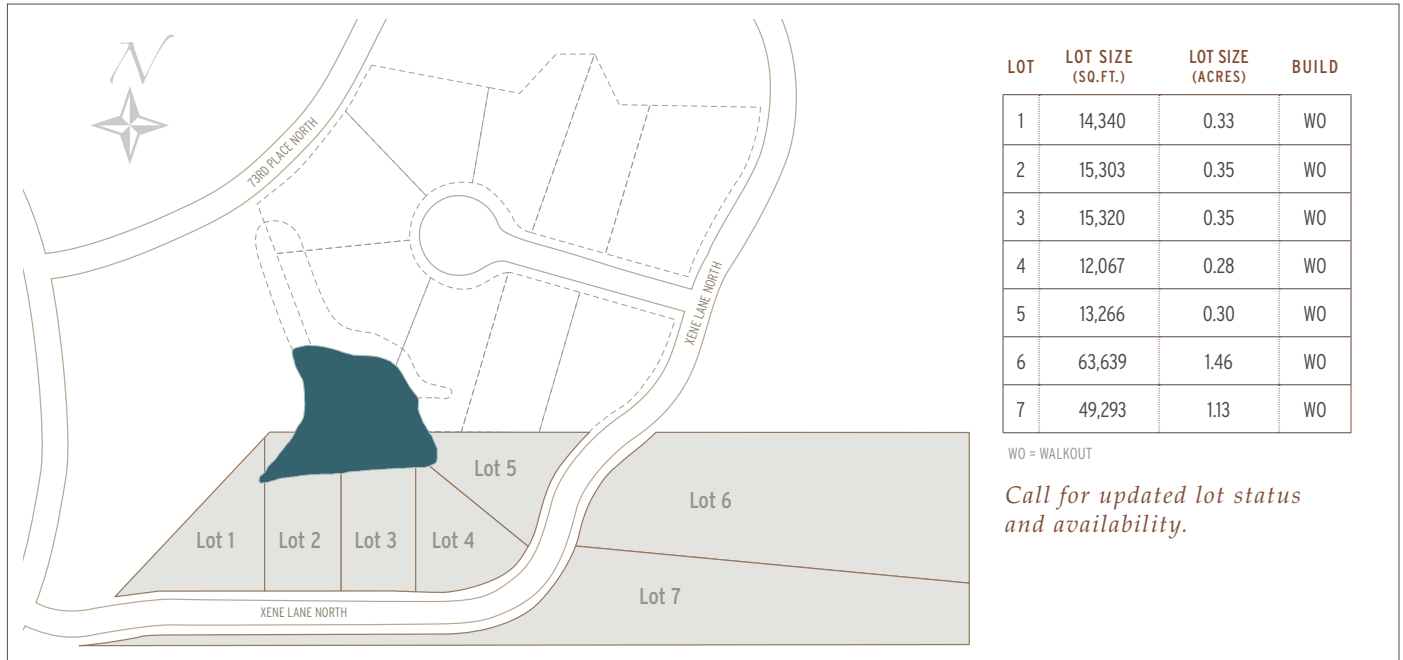
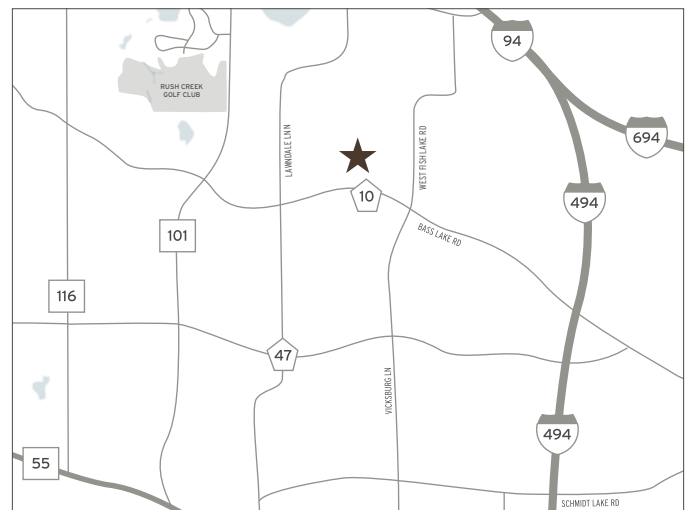


Welcome to The Palisades at Nottingham III



Zehnder Homes is proud to present its latest development in one of Maple Grove's most sought after communities. The Palisades at Nottingham III features seven lots located within the Nottingham neighborhood offering two private community pool and park areas and direct access to miles of trails located within the Three Rivers Park District. Conveniently located to ample shopping and entertainment options. Award winning Maple Grove schools.



- Custom home packages
- Seven custom homes sites
- Two private community pool and park recreation areas
- Direct access to expansive trail system
- Basswood Elementary, Maple Grove Middle School, Maple Grove Senior High

THE PALISADES AT **Nottingham III** By Zehnder Homes



The Dogwood

5 BEDS / 5 BATHS / 3-CAR GARAGE

Total Finished Sq. Ft. 4,107

- Main floor office/study
- Main floor flex room for crafts or hobbies
- Exercise room on lower level

The Azalea

5 BEDS / 5 BATHS / 3-CAR GARAGE

Total Finished Sq. Ft. 4,437

- Upper level loft
- Main floor office/study
- Wet bar in lower level

The Magnolia

5 BEDS / 5 BATHS / 3-CAR GARAGE

Total Finished Sq. Ft. 4,764

- Main floor office/study
- Wet bar in lower level
- Large informal dining room

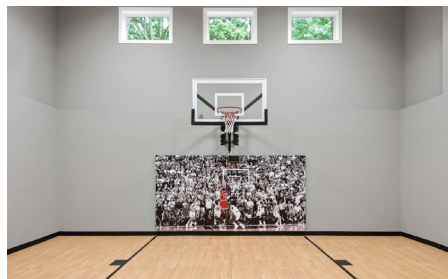
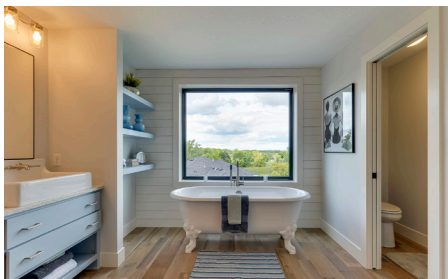
Features

- Custom cabinets with soft-close guides
- Granite countertops with tile backsplash
- Gourmet kitchen with stainless steel appliances
- 9' Knockdown ceilings
- 4" tongue & groove hardwood floors
- Enameled, solid 3-panel doors
- 3 1/2" enameled casing around windows and doors
- 4 1/2" enameled base throughout home
- Great room with stone fireplace and built-in cabinets
- Mudroom with built-ins, lockers and bench
- Jr. suite with walk-in closet and 3/4 bath
- Jack & Jill bedrooms with connecting full bath
- Large upper level laundry room
- Finished lower-level with bedroom, wet bar and large open family room
- Zoned heating
- James Hardie siding on all sides of home

Options

- Sport court*
- 4th Car garage
- Screen porch or 4-Season porch

**Basement revisions are required to accommodate sport court and will impact listed square footage totals.*



RE LIC# 40383119