



The “Azalea” by Zehnder Homes

4,437 FINISHED SQ.FT. • 5 BEDROOMS/5 BATHROOMS

Features

- Custom cabinets with soft-close guides
- Granite countertops with tile backsplash
- Gourmet kitchen with stainless steel appliances
- 9' Knockdown ceilings
- 4" tongue & groove hardwood floors
- Enameled, solid 3-panel doors
- 3 1/2" enameled casing around windows and doors
- 4 1/2" enameled base throughout home
- Great room with stone fireplace and built-in cabinets
- Mudroom with built-ins, lockers and bench
- Jr. suite with walk-in closet and 3/4 bath
- Jack & Jill bedrooms with connecting full bath
- Large upper level laundry room
- Finished lower-level with bedroom, wet bar and large open family room
- Zoned heating
- James Hardie siding on all sides of home

Options

- Sport court*
- 4th Car garage
- Screen or 4-Season porch

**Basement revisions are required to accommodate sport court and will impact listed square footage totals.*

The "Azalea"

4,437 FINISHED SQ.FT.
5 BEDROOMS/5 BATHROOMS

Main Level

1,462 FINISHED SQ.FT

- Great Room 18 x 17
- Kitchen 20 x 13
- Dining Room 16 x 9
- Study 10 x 10
- Living Room 13 x 12
- Mud Room 16 x 7

Upper Level

1,730 FINISHED SQ.FT

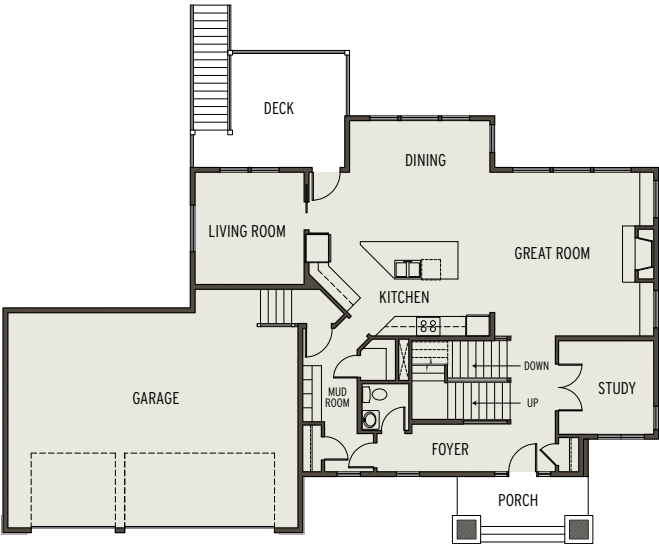
- Master Suite 15 x 15
- Bedroom 2 13 x 11
- Bedroom 3 15 x 12
- Bedroom 4 11 x 14
- Loft 14 x 12
- Laundry 7 x 7

Lower Level

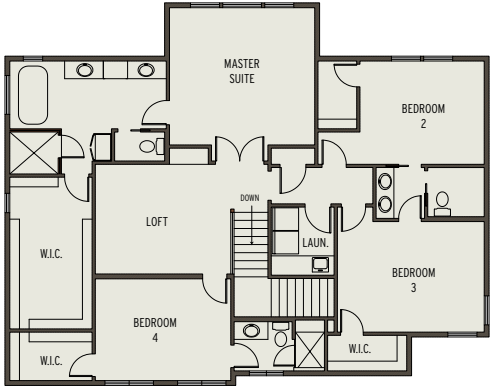
1,245 FINISHED SQ.FT

- Bedroom 5 13 x 16
- Family Room 17 x 18
- Game Room 16 x 22
- Wet Bar 9 x 10

Main Level



Upper Level



Lower Level

